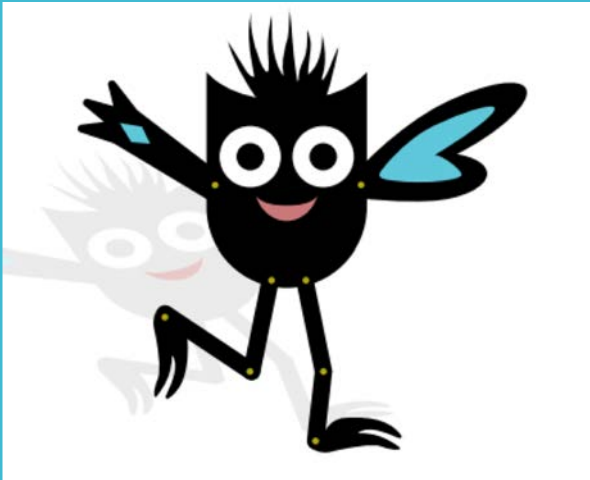


Shadow Puppet Screen

Assembly Instructions



Shadow Puppet Screen Instructions

Copyright WP Puppet Theatre 2020. No part of this publication may be reproduced in whole or in part, stored in a retrieval system or transmitted in any form or by any means, electronic, mechanical, photocopying, recording or otherwise, without written permission

W..P. Puppet Theatre Society

Box 61116 Kensington PO

Calgary, AB, CANADA T2N 4S6

www.wppuppet.com

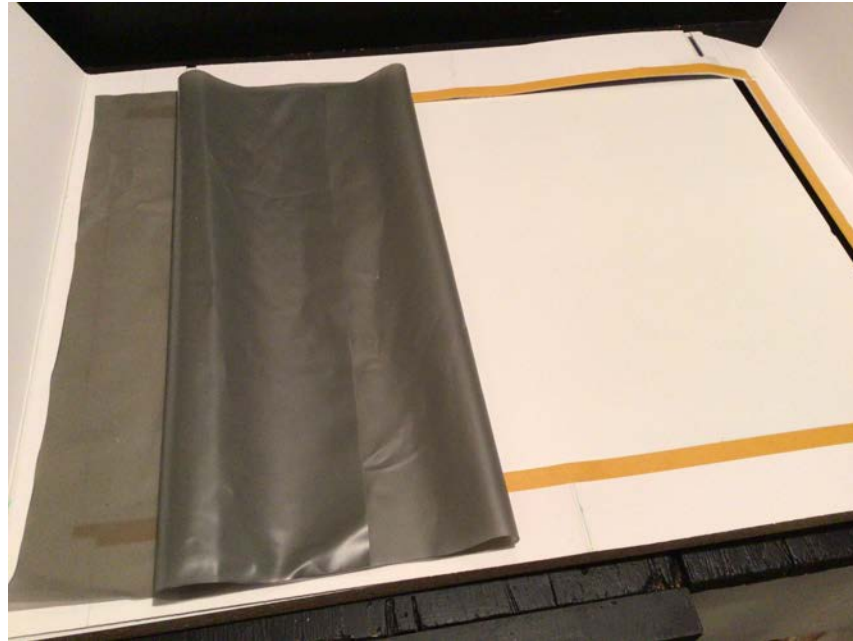
Parts



Parts:

- Matte board stage with rectangle cut opening - *coloured side faces the audience and the white side faces the performer*
- Shadow screen material – *matte side faces the audience and the shiny side faces the performer*
- 2 x matte board bracing stripes
- 2 form core corner support braces

Insert Shadow Screen Material



Insert Shadow Screen Material

- Step 1: Lay the stage flat on a table with the coloured side down.
- Step 2: Peel off the brown paper from the double-sided tape on **the left edge of stage**, and carefully adhere the shadow puppet screen material. Positioning it to fit. *Try not to let the screen cover the slots where the core board support will go.*

Insert Shadow Screen Material



Insert shadow screen material

- Step 3: Peel off the brown paper from the double-sided tape on the **three other edges**, and carefully adhere the rest of the shadow puppet screen material.
- Step 4: Press all four sides to make sure it seals well.
- Step 5: To make the screen more secure you can use masking tape along the edges as pictured.

Put on Cardboard Bracing



Put on cardboard bracing:

- Step 1: flip the stage over and lay flat, coloured side up.
- Step 2: Peel off the brown paper from the double-sided tape on the two matte board braces.
- Step 3: Position them across the top and the bottom of the opening, matching centre points.

Insert Foam Core Corner Braces



Insert foam core corner braces:

- Step 1: Stand the stage up and fold the wings back.
- Step 2: Insert the slits in the corners of the stage bottom into the foam core support braces.

Decorate (optional)



Decorate (optional)

- Decorate the front of the stage with markers or paper collage.
- Write your stage notes on the back if you like.